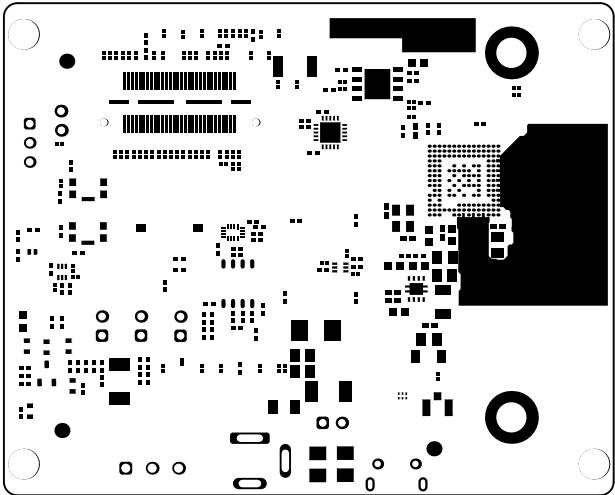
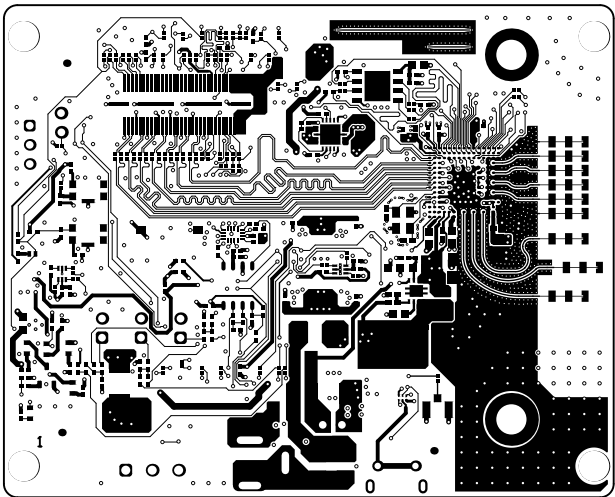


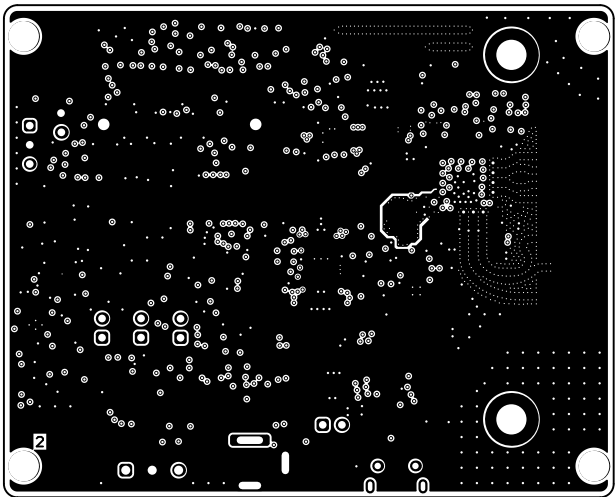
ALL ARTWORK VIEWED FROM TOP SIDE	BOARD #: PROC010	REV: B	SUN REV: Not In VersionControl
LAYER NAME = Top Overlay	TID #: N/A		
	GENERATED : 8/24/2018 10:44:11 AM		TEXAS INSTRUMENTS



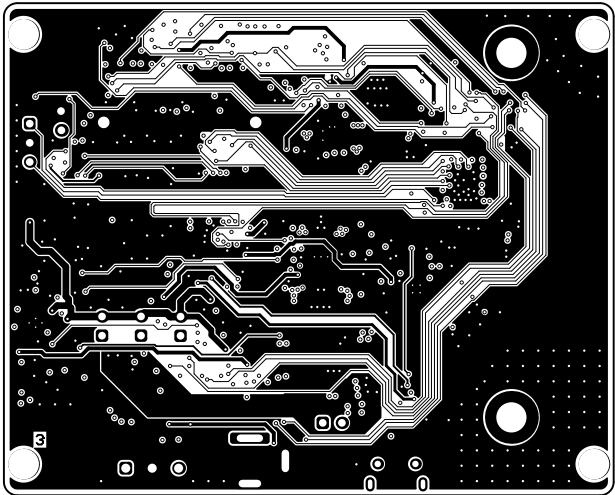
ALL ARTWORK VIEWED FROM TOP SIDE	BOARD #: PROC010	REV: B	SUN REV: Not In VersionControl
LAYER NAME = Top Solder	TID #: N/A		
	GENERATED : 8/24/2018 10:44:12 AM		TEXAS INSTRUMENTS



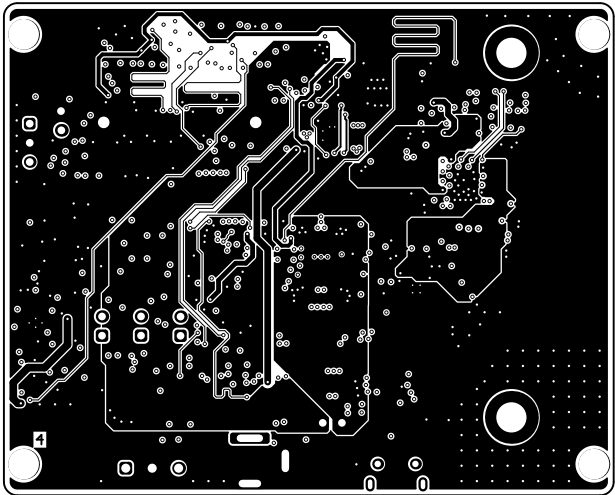
ALL ARTWORK VIEWED FROM TOP SIDE	BOARD #: PROC010	REV: B	SUN REV: Not In VersionControl
LAYER NAME = TOP	TID #: N/A		
	GENERATED : 8/24/2018 10:44:14 AM	TEXAS INSTRUMENTS	



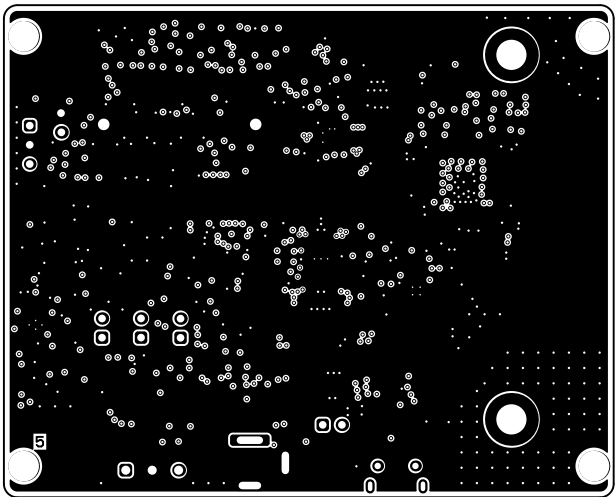
ALL ARTWORK VIEWED FROM TOP SIDE	BOARD #: PROC010	REV: B	SUN REV: Not In VersionControl
LAYER NAME = L2	TID #: N/A		
	GENERATED : 8/24/2018 10:44:15 AM		TEXAS INSTRUMENTS



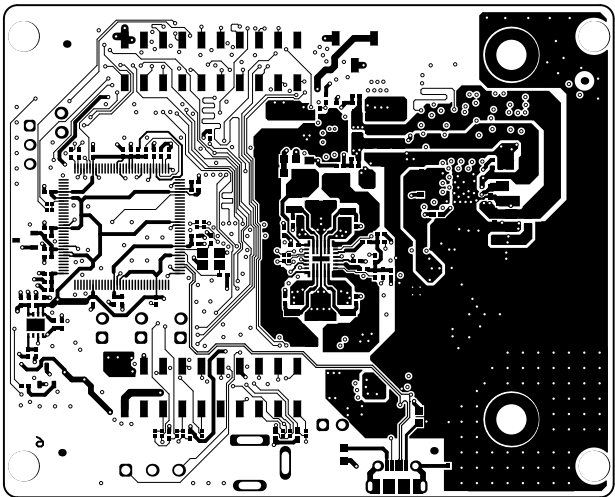
ALL ARTWORK VIEWED FROM TOP SIDE	BOARD #: PROC010	REV: B	SUN REV: Not In VersionControl
LAYER NAME = L3	TID #: N/A		
	GENERATED : 8/24/2018 10:44:16 AM		TEXAS INSTRUMENTS



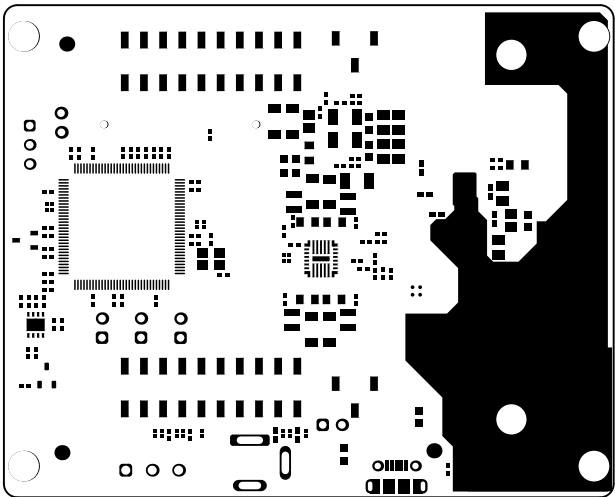
ALL ARTWORK VIEWED FROM TOP SIDE	BOARD #: PROC010	REV: B	SUN REV: Not In VersionControl
LAYER NAME = L4	TID #: N/A		
	GENERATED : 8/24/2018 10:44:18 AM		TEXAS INSTRUMENTS



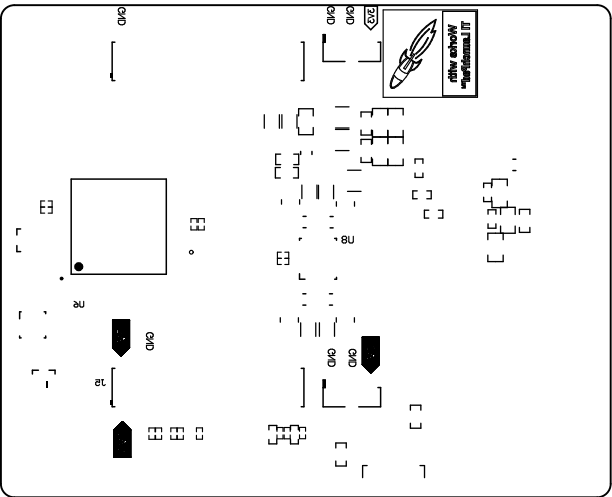
ALL ARTWORK VIEWED FROM TOP SIDE	BOARD #: PROC010	REV: B	SUN REV: Not In VersionControl
LAYER NAME = L5	TID #: N/A		
	GENERATED : 8/24/2018 10:44:19 AM		TEXAS INSTRUMENTS



ALL ARTWORK VIEWED FROM TOP SIDE	BOARD #: PROC010	REV: B	SUN REV: Not In VersionControl
LAYER NAME = BOTTOM	TID #: N/A		
	GENERATED : 8/24/2018 10:44:20 AM	TEXAS INSTRUMENTS	



ALL ARTWORK VIEWED FROM TOP SIDE	BOARD #: PROC010	REV: B	SUN REV: Not In VersionControl
LAYER NAME = Bottom Solder	TID #: N/A		
	GENERATED : 8/24/2018 10:44:21 AM		TEXAS INSTRUMENTS



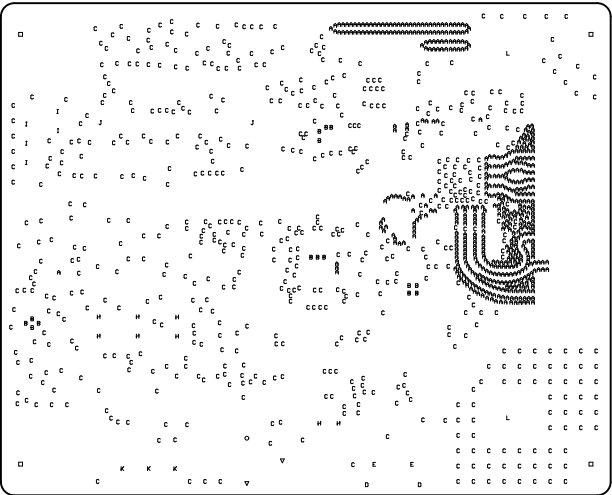
ALL ARTWORK VIEWED FROM TOP SIDE	BOARD #: PROC010	REV: B	SUN REV: Not In VersionControl
LAYER NAME = Bottom Overlay	TID #: N/A		
	GENERATED : 8/24/2018 10:44:22 AM	TEXAS INSTRUMENTS	

DRILL CHART :

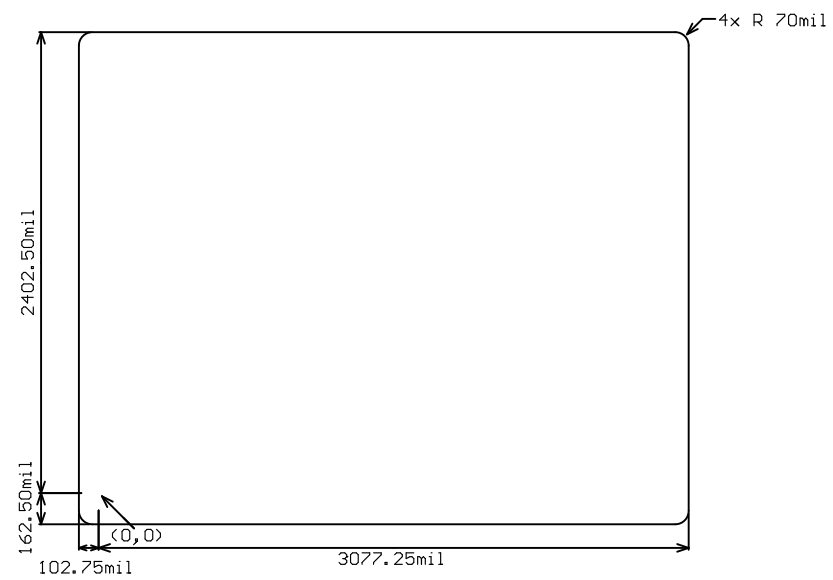
Symbol	Count	Hole Size	Plated	Hole Type	Hole Length	Routed Path Length	Drill Layer Pair	Tolerance
A	508	5.90mil (0.150mm)	PTH	Round	-	-	TOP - L2	+0.00mil/-5.90mil
	508 Total							

Symbol	Count	Hole Size	Plated	Hole Type	Hole Length	Routed Path Length	Drill Layer Pair	Hole Tolerance
B	15	7.87mil (0.200mm)	PTH	Round	-	-	TOP - BOTTOM	+0.00mil/-7.87mil
C	621	12.20mil (0.310mm)	PTH	Round	-	-	TOP - BOTTOM	+0.00mil/-12.20mil
D	2	23.62mil (0.600mm)	PTH	Slot	51.18mil (1.300mm)	27.56mil (0.700mm)	TOP - BOTTOM	+/-3.00mil
E	2	33.47mil (0.850mm)	PTH	Round	-	-	TOP - BOTTOM	+/-3.00mil
V	2	39.37mil (1.000mm)	PTH	Slot	118.11mil (3.000mm)	78.74mil (2.000mm)	TOP - BOTTOM	+/-3.00mil
O	1	39.37mil (1.000mm)	PTH	Slot	137.80mil (3.500mm)	98.43mil (2.500mm)	TOP - BOTTOM	+/-3.00mil
H	8	40.00mil (1.016mm)	PTH	Round	-	-	TOP - BOTTOM	+/-3.00mil
J	2	40.16mil (1.020mm)	NPTH	Round	-	-	TOP - BOTTOM	+/-2.00mil
I	5	40.16mil (1.020mm)	PTH	Round	-	-	TOP - BOTTOM	+/-3.00mil
K	3	47.24mil (1.200mm)	PTH	Round	-	-	TOP - BOTTOM	+/-3.00mil
L	2	157.48mil (4.000mm)	PTH	Round	-	-	TOP - BOTTOM	+/-3.00mil
□	4	160.00mil (4.064mm)	NPTH	Round	-	-	TOP - BOTTOM	+/-2.00mil
	667 Total							

Slot definitions : Routed Path Length = Calculated from tool start centre position to tool end centre position.
Hole Length = Routed Path Length + Tool Size = Slot length as defined in the PCB layout



ALL ARTWORK VIEWED FROM TOP SIDE	BOARD #: PROC010	REV: B	SUN REV: Not In VersionControl
LAYER NAME = FAB	TID #: N/A		
	GENERATED : 8/24/2018 10:44:24 AM	TEXAS INSTRUMENTS	



ALL ARTWORK VIEWED FROM TOP SIDE	BOARD #: PROC010	REV: B	SUN REV: Not In VersionControl
LAYER NAME =	TID #: N/A		
	GENERATED : 8/24/2018 10:44:27 AM		TEXAS INSTRUMENTS